

Hospital Improves Airflow, Saves Energy with AAF Flanders Solutions

CASE STUDY – HEALTHCARE

Customer Profile

- University of Louisville Hospital located in Louisville, KY
- 404-bed hospital serving as the leading academic and research facility in the area
- The only Level 1 Trauma center in the region
- Nationally recognized as a leader in trauma, stroke, high-risk OB, radiological/diagnostic services, cancer care, and regional clinical services



The Filtration Situation

The Air Handling Unit (AHU 16) was originally installed to provide airflow to the Oncology area of the hospital. Over the years, additional ducts were incorporated, and now AHU 16 provides airflow to five areas of the hospital. Looking for an alternative option to replacing its costly motor, the University of Louisville Hospital's Director of Engineering asked AAF Flanders to assess the hospital's current filtration system and recommend a viable solution for AHU 16.

AHU 16 uses variable inlet guide vanes to control the flow of the supply fan. The variable inlet vanes in their fully open state could not supply enough airflow capacity, due to the high static pressure in the system. The work output of the fan and its motor contributed directly to the airflow exiting the AHU. With the additional load, the AHU was deprived of the necessary air for proper ventilation. In order to pull more air into the system, the 100 horsepower fan motor would need to be sped up or replaced – an extremely expensive purchase for the hospital.

The current 3-stage filtration system consisted of AmerSeal® Cube prefilters, VariCel® II secondary filters, and AstroCel® I high capacity HEPA final filters.

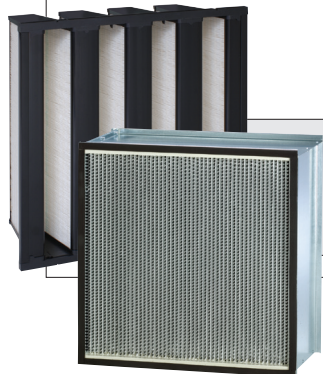
"...proven to be efficient and cost effective."

*–John Gildehaus, CHFM
Director of Engineering*

The AAF Flanders Solution

AAF Flanders representatives saw this as an opportunity to remove a stage of filtration to evaluate if there would be improved airflow and reduced energy consumption. A Total Cost of Ownership (TCO) analysis was generated to illustrate the potential energy saving benefits, based on moving to a 2-stage filtration system with the parameters provided by the University of Louisville Hospital. AAF Flanders' exclusive TCO program takes into account: cost of electricity (kWh), labor rates, cost of filters, air volume, operating hours, operating resistance, and disposal cost.

The AmerSeal Cube filters were removed from the system, eliminating the prefilter stage. VariCel II filters were replaced with VariCel VXL filters, AAF Flanders' 8-panel high efficiency filters designed for use in difficult operating conditions. The high capacity AstroCel I HEPA filters were upgraded to MEGAcel® I HEPA filters with ePTFE Filtration Technology, providing high efficiency and low energy consumption. University of Louisville Hospital then allowed AAF Flanders to monitor the changes in pressure drop across the filter section over the next 12 months.



The VariCel® VXL MERV 14 filter, with its dual density media, maximizes dust holding capacity and therefore, extends filter life. Also, the low pressure drop of the VariCel® VXL saves energy. MEGAcel® I filters incorporate AAF Flanders' unique ePTFE Filtration Technology, a proprietary, durable media, combining high efficiency with extremely low pressure drop. Lower initial resistance significantly reduces energy consumption, resulting in substantial energy savings and cost benefits.

Hospital Improves Airflow, Saves Energy with AAF Flanders Solutions

The Energy Saving Benefits

AAF Flanders' TCO analysis evaluated the original 3-stage filtration system configuration, as well as a proposed 2-stage system. The hospital's Director of Engineering agreed to trial the proposed system and record the pressure drop of the filters each month to monitor changes. The results from the hospital's readings consistently verified the reduced resistance of the MEGAcel I filters and the VariCel VXL filters. With the reduced resistance came an increase in airflow across the system, ultimately eliminating the need for a costly upgrade to the motor.

"After our 12 month study, the filters have proven to be efficient and cost effective," said John Gildehaus, CHFM, Director of Engineering for the hospital. With AAF Flanders solutions, University of Louisville Hospital increased airflow, decreased energy consumption, and realized labor savings from the reduction in filter changeouts, providing them with overall savings. The original system configuration had an annual cost of \$16,730 (Fig. 1). The new configuration produced an annual cost of \$9,277. **The result was an annual savings of \$7,259!**



Prior to AAF Flanders' recommended solution, the door to AHU 16 had to be left open to increase airflow in the mechanical room. After the installation of AAF Flanders' VariCel® VXL and MEGAcel® I filters, the door to AHU 16 could finally be closed.

AmerSeal®, VariCel®, MEGAcel®, and AstroCel® are registered trademarks of AAF International in the U.S. and other countries

the result...

an annual savings of \$7,259!

Total Cost of Ownership

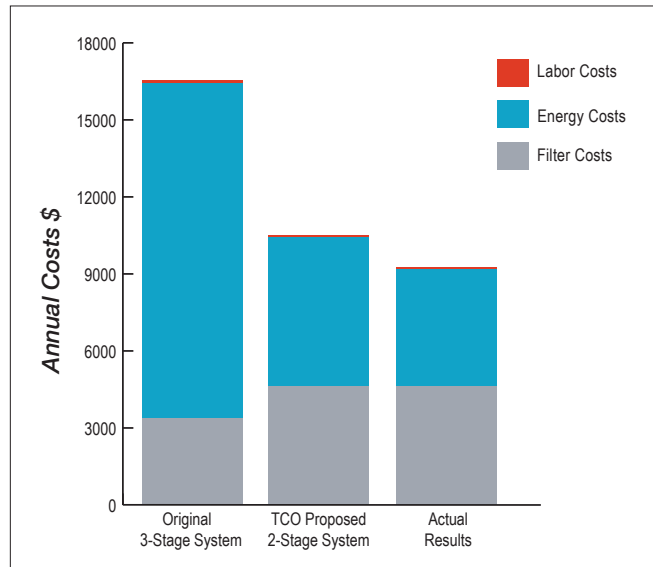
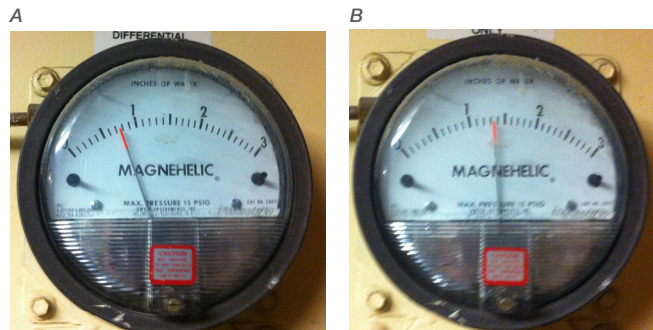


Figure 1



Pressure drop initial and final readings from AHU 16 with MEGAcel® I filters installed. Image A shows the initial pressure drop reading. Image B shows the final pressure drop reading.

To learn more about AAF Flanders Solutions visit us online at aafintl.com or contact your local AAF Flanders Rep at **888.223.2003**



9920 Corporate Campus Drive, Suite 2200, Louisville, KY 40223-5690
888.223.2003 Fax 888.223.6500 | aafintl.com

AAF Flanders has a policy of continuous product research and improvement and reserves the right to change design and specifications without notice.

©2017 AAF International and its affiliated companies.

ISO Certified Firm

AFP-6-107B 01/17