

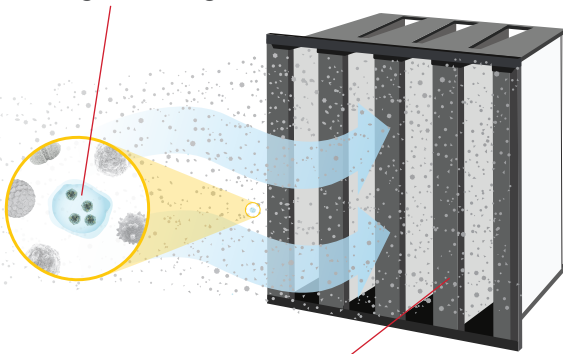


# Clean Air for Healthcare

In light of the COVID pandemic, the American Society of Heating, Refrigeration, and Air Conditioning Engineers (ASHRAE) coordinated with related industry groups to update numerous portions of the ANSI/ASHRAE/ASHE [Standard 170-2021](#), Ventilation of Health Care Facilities. The information in this standard helps keep your residents, staff, and visitors safe and healthy according to the type of facility and the individual spaces within it.

## Did you know?

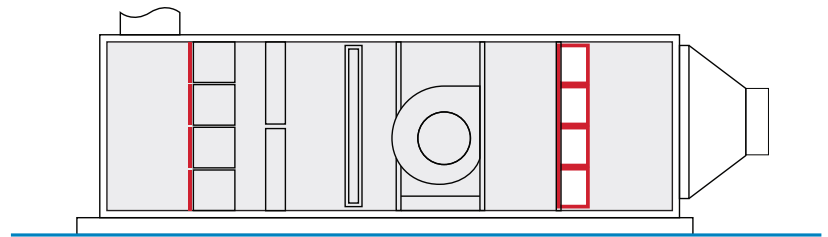
Virus particles can piggyback on larger dust particles or droplets and travel through a building.



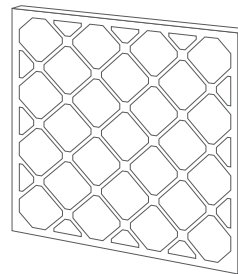
Air filters with a rating of **MERV 14 or higher** capture at least 75% of airborne particles between 0.3 and 1.0 microns.

## Consider Upgrading

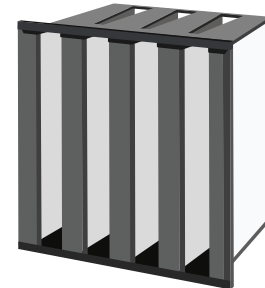
Better prefilters in a 2-stage system can help to extend the life of the secondary filter, allowing for cost-effective upgrades to secondary filters. **MERV 14+** filters have proven effective in capturing fine airborne particles that can carry viruses.



**Prefilter**  
MERV 8  
minimum



**Secondary Filter**  
MERV  
14 to 16



## Air Filtration Solutions

The air filtration products identified below are available now and help facility administrators upgrade their protection against virus-carrying particles without replacing or retrofitting current HVAC systems.

For more information on [filtration and disinfection](#), view tips & suggestions from ASHRAE (American Society for Heating, Refrigeration, and Air-Conditioning Engineers).



### **MEGApleat® M9 Pleated Filter**

- MERV 9 efficiency
- Longest lasting prefilter
- Sturdiness that protects against possible contamination from filter failure
- Greater dust-holding capacity

*NOTE: These air filters use mechanical filtration and do not experience a decrease in particle efficiency over time."*



### **VariCel® VXL Box Filter**

- Available in MERV 11, 13, 14, or 15 efficiencies
- 50% more media area lowers resistance
- Excellent performance in difficult operating conditions
- Higher overall particle efficiency as compared to similar box filters

*BioCel® VXL filters are available in MERV 16.*

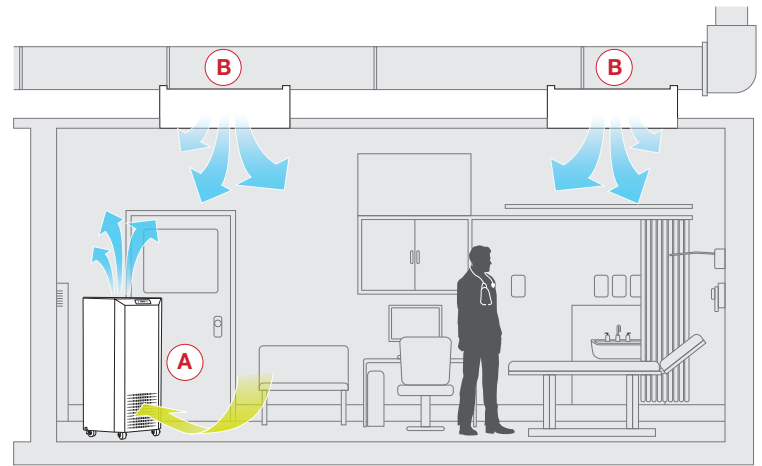
# Clean Air for Healthcare

## Boost In-Room Air Filtration

In addition to upgrading air filters, *ducted modules* containing *HEPA filters* purify the air heading into a specific space, while *portable air purification systems* reduce exposure levels within the risk of airborne transmission within occupied spaces, such as therapy spaces, anterooms, and resident rooms.

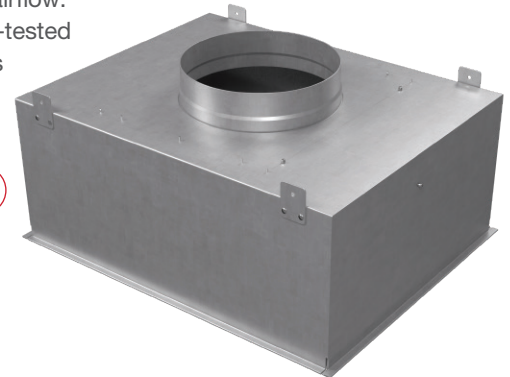
### **AstroPure™ Portable Air Purification System**

- MERV 11 prefilter and HEPA filter with eFRM media technology combine to maximize particle efficiency and energy efficiency
- Unique interactive interface streamlines set-up and ongoing operation
- Integrated PM sensor tracks particulate level reduction in target space
- Model the reduction in airborne particulates using AstroPure with **VisionAir™ IEQ software**



### **AstroHood™ Ducted Modules**

- Contains HEPA filter with eFRM technology to maximize particle efficiency and energy efficiency.
- Energy-saving damper option further enhances energy efficiency and control over airflow.
- Welded, pressure-tested module eliminates leak paths.



## Know Which Solution Works for Your Facility

Because the constraints of your system can make it difficult to know how you can best upgrade air filtration, we suggest pairing a complimentary **air filtration audit** with an analysis generated by our **TCO Diagnostic® platform**.

**Air Filtration Audit** AAF Flanders air filtration experts thoroughly examine your air filtration system and report their findings. Free of charge, they provide you with:

- Documentation of the current state of an air filtration system
- Guidance as to how to reduce energy spending, decrease IAQ risks, and reduce maintenance labor
- Performance data as a benchmark that can be compared against past or future data

**TCO Diagnostic® Software** This technology platform compares your current air filtration system against other possible configurations, factoring in estimated costs for energy, labor, and air filters. You can use this information to make informed decisions that upgrade filtration efficiency and:

- Minimize energy use
- Optimize labor costs associated with air filtration maintenance
- Identify the configuration with lowest long-term costs

## Receive a Free Air Filtration Audit.



Contact an AAF Flanders representative today to discuss this **FREE** assessment, so you can upgrade your air filtration without overtaxing your HVAC system.



**AAF | Flanders**  
Bringing clean air to life.

888.223.2003 | aafintl.com